

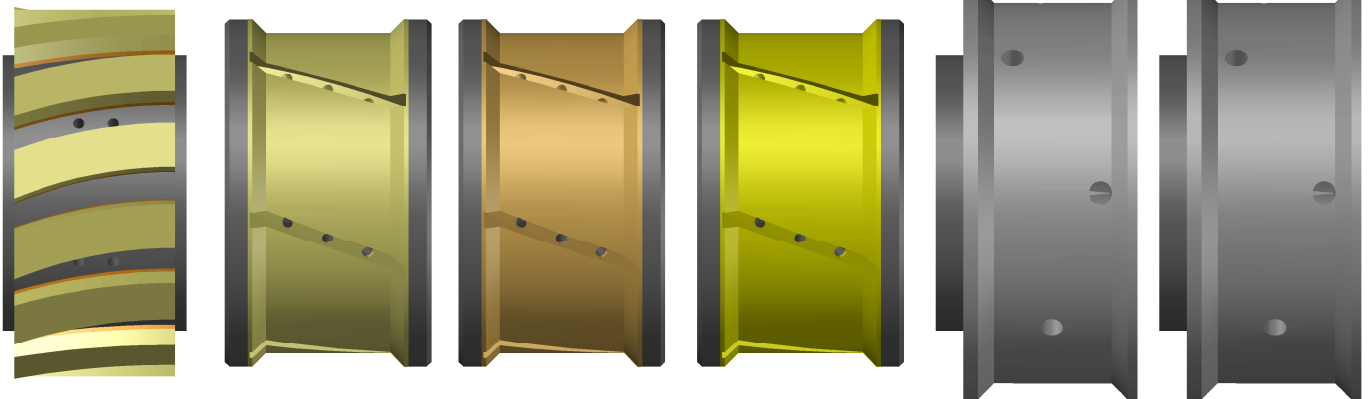
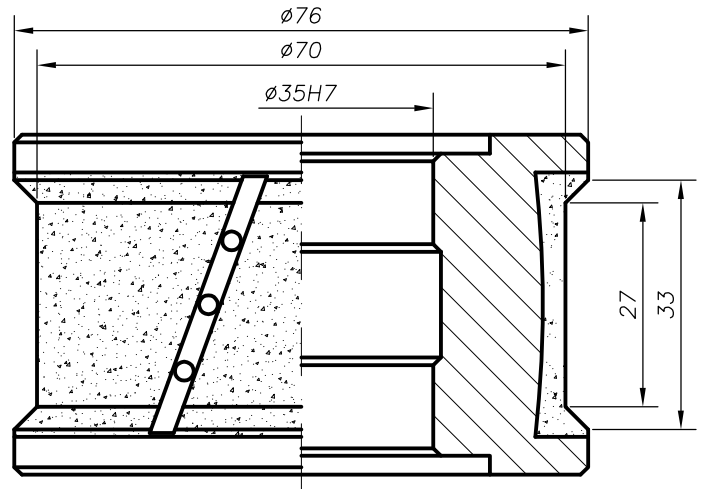
pomdi

PERFIL/PROFILE:
Z2-30

NOMBRE/NAME:
FLAT POLISH-30 (2 BEVEL)

Z2-30

VIT



	POS.	CÓDIGO/CODE	DESCRIPCIÓN/DESCRIPTION
METALICA METALLIC	1	S-740640	CNC 35 D80 ZACK (Z0 30) M P.1 SEG-A VIT
	2	S-740641	CNC 35 D76 ZEUS (Z2 30) M P.2 VIT
	3	S-740642	CNC 35 D76 ZEUS (Z2 30) M P.3 VIT
	4	S-740643	CNC 35 D76 ZEUS (Z2 30) M P.4 VIT
DIAMLOX	5	S-870289	CNC 35 D90 ZEUS (Z2 30) DIAMLOX 800
	6	S-870121	CNC 35 D90 ZEUS (Z2 30) DIAMLOX 1200