

PERFIL/PROFILE:

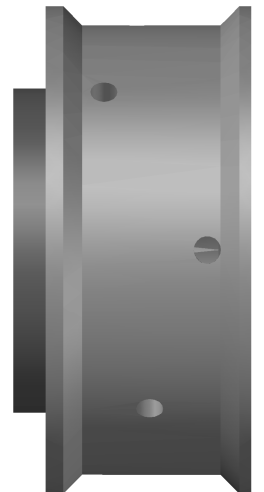
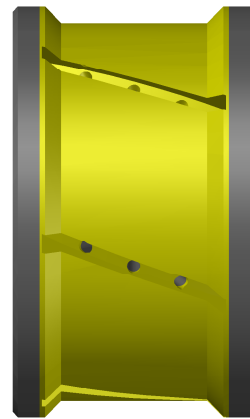
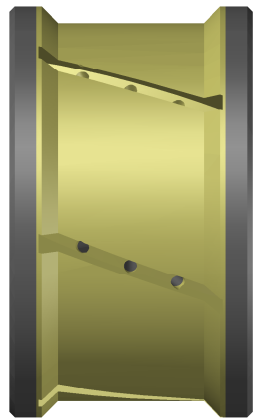
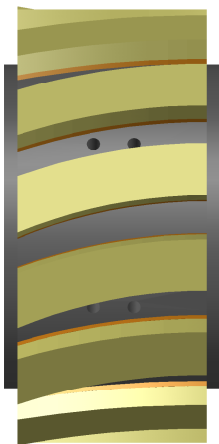
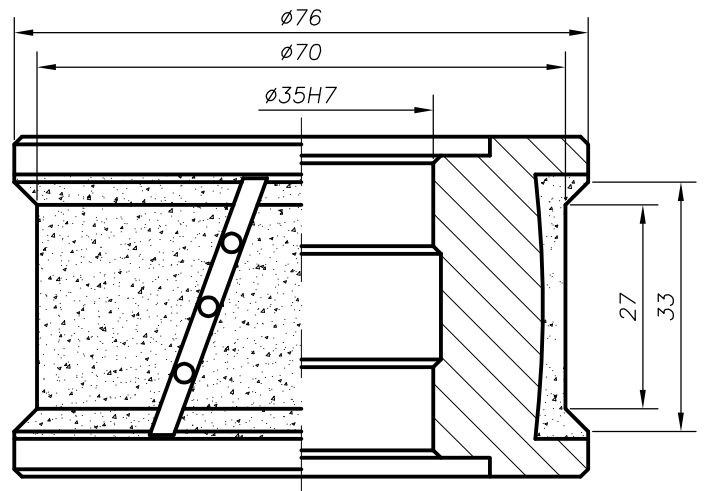
Z2-30

NOMBRE/NAME:

FLAT POLISH-30 (2 BEVEL)

Z2-30

EXC



	POS.	CÓDIGO/CODE	DESCRIPCIÓN/DESCRIPTION
METALICA METALLIC	1	S-743316	CNC 35 D80 ZACK (Z0 30) M P.1 SEG-A EXC
	2	S-743317	CNC 35 D76 ZEUS (Z2 30) M P.2 EXC
	3	S-743318	CNC 35 D76 ZEUS (Z2 30) M P.3 EXC
	4	S-743311	CNC 35 D76 ZEUS (Z2 30) M P.4 EXC
DIAMLOX	5	S-870171	CNC 35 D90 ZEUS (Z2 30) DIAMLOX 1200