

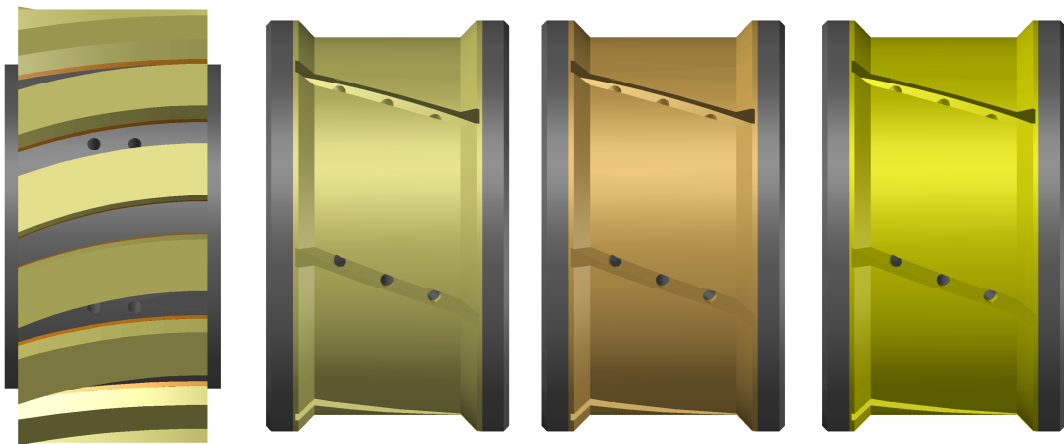
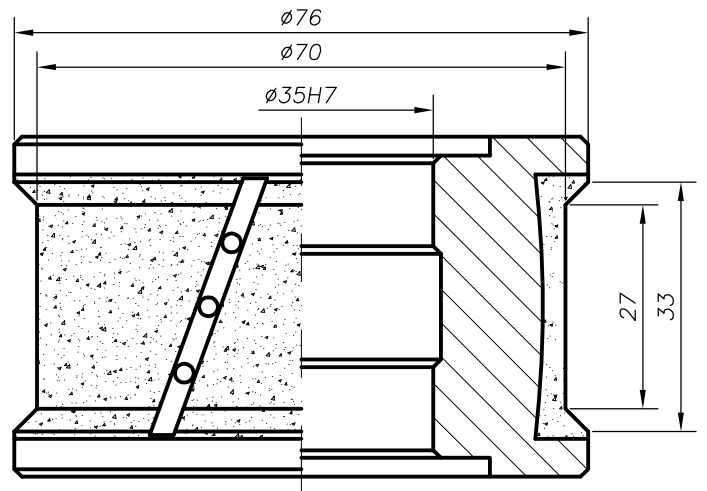
# pomdi

PERFIL/PROFILE:  
Z2-30

NOMBRE/NAME:  
FLAT POLISH-30 (2 BEVEL)

Z2-30

EXC SIL



	POS.	CÓDIGO/CODE	DESCRIPCIÓN/DESCRIPTION
METALICA METALLIC	1	-	CNC 35 D80 ZACK (Z0 30) M P.1 SEG-A EXC SIL
	2	-	CNC 35 D76 ZEUS (Z2 30) M P.2 EXC SIL
	3	-	CNC 35 D76 ZEUS (Z2 30) M P.3 EXC SIL
	4	-	CNC 35 D76 ZEUS (Z2 30) M P.4 EXC SIL