

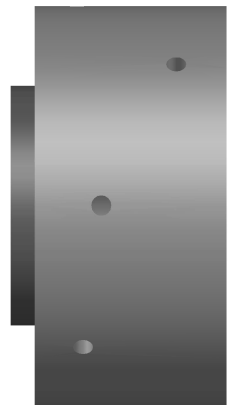
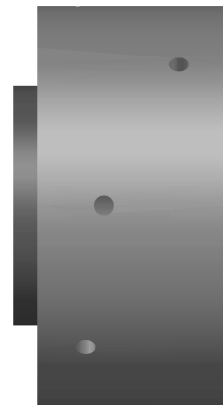
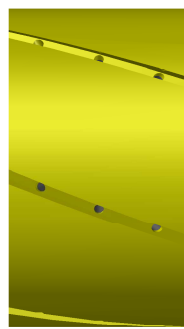
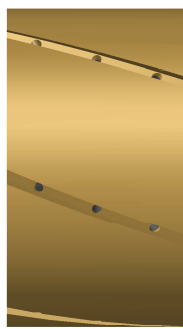
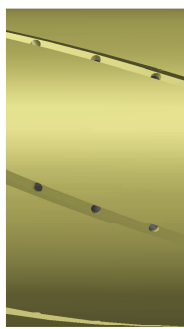
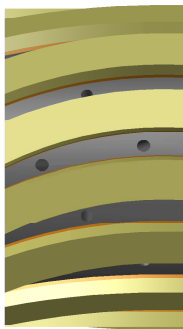
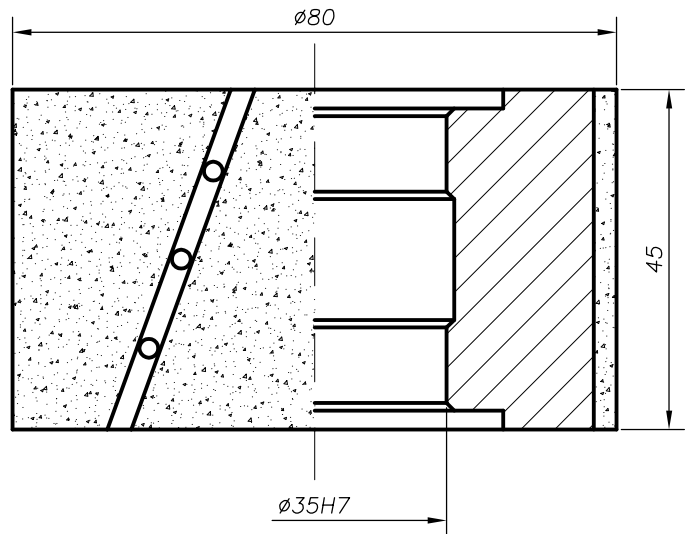
# pomdi

PERFIL/PROFILE:  
Z0-40

NOMBRE/NAME:  
FLAT POLISH-40

Z0-40

VIT



	POS.	CODIGO/CODE	DESCRIPCIÓN/DESCRIPTION
METALICA METALLIC	1	S-744280	CNC 35 D80 ZACK (Z0 40) M P.1 SEG VIT
	2	S-744339	CNC 35 D80 ZACK (Z0 40) M P.2 VIT
	3	-	CNC 35 D80 ZACK (Z0 40) M P.3 VIT
	4	-	CNC 35 D80 ZACK (Z0 40) M P.4 VIT
DIAMLOX	5	S-870211	CNC 35 D100 ZACK (Z0 40) DIAMLOX 800
	6	S-870123	CNC 35 D100 ZACK (Z0 40) DIAMLOX 1200